

**LIVERPOOL RECORD OFFICE, LOCAL STUDIES AND
FAMILY HISTORY SERVICE**

Central Library William Brown Street Liverpool L3 8FW

General enquiries 0151 233 5817
0151 233 5811
Fax (Central Library) 0151 233 5886
E-mail recoffice.central.library@liverpool.gov.uk

For opening hours, some catalogues and development news, please
visit our website at www.liverpool.gov.uk/archives

Appointments are not essential for viewing sources on microfilm and
on microfiche. A reader's ticket is needed to request archives, books,
maps, photographs and watercolours. Please bring proof of name
and address. You will be asked to leave any bags in lockers before
consulting original material.

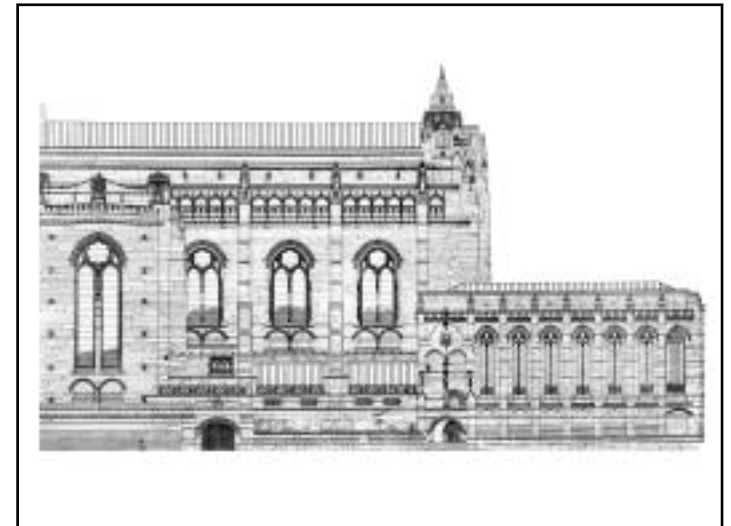
Annual closure for stock-taking and special projects 3rd and 4th weeks in
June.



May 2008

ARCHITECTURAL DRAWINGS & BUILDING PLANS

INFORMATION LEAFLET 20



Liverpool Record Office and Merseyside Record Office hold a large number of architect's drawings, building plans, measured drawings, and illustrations of buildings. They are of great value to local historians, building restorers and developers, and to students of architecture and planning. They include drawings of many Public Buildings, such as St. George's Hall, Cinemas, Offices, Churches, Workhouses and Council Tenements.



The City of Liverpool



Liverpool RECORD OFFICE

PRIMARY SOURCES

- Architects' Drawings and plans e.g. Edmund Kirby
- Builder's Plans and sections.
- Services (heating) Engineer's plans e.g. Ashwell Nesbit
- Measured Drawings e.g. by students of the University of Liverpool School of Architecture.
- Company Archives.
- Official Bodies Archives e.g. Hospitals, School Board, Merseyrail, Churches.
- Parliamentary Plans, submitted with Bills such as consent for railways.
- Personal Family and Estate Records e.g. Speke Hall Estate.

SECONDARY SOURCES

- Maps e.g. large scale Ordnance Survey 1847 & 1891.
- Journals e.g. *The Builder*
- Handbooks, opening ceremony programmes and guidebooks.
- News-cuttings.
- Photographs and small prints
- Watercolours.

CATALOGUES AND GUIDES

A guide and list of drawings is available in the Archive Search Room.

There are several catalogues and lists which you may need to consult to find all or any drawings of a building you are researching.



Liverpool RECORD OFFICE

Liverpool Record Office

- Guide & List of plans and drawings.
- Archive Lists e.g. 720KIR
- CALM 2000 Data base
- Local Studies Catalogue
- Map lists and key sheets
- Catalogues of Photographs and small prints.
- Catalogue of watercolours

Merseyside Record Office

- Guide & List of plans and drawings
- Archive Lists
- Calm 2000 Data Base.

Please ask the staff for assistance, as we may be able to find additional sources.

Many of the original drawings and plans are in a fragile condition so access and copying may be restricted.

Please handle all plans with care.

Copying

A photocopier and a laser colour copier are available for A3 size copies. Digital images can also be arranged, and you are welcome to photograph the plans using your own camera. Please note that the images for anything other than private research will require copyright clearance and permission for reproduction.